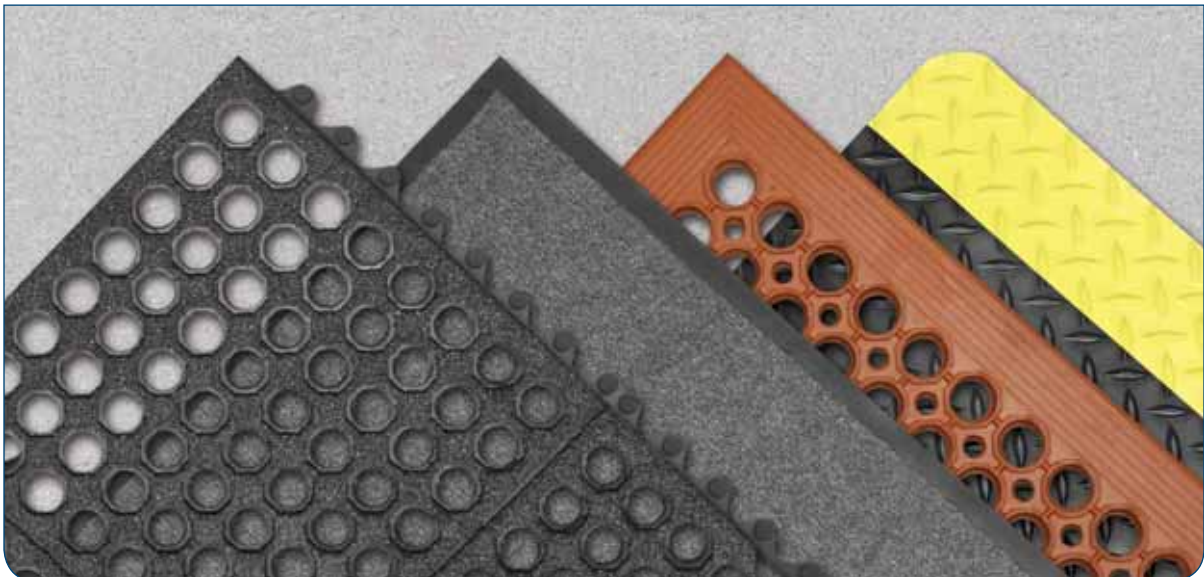




AKRO[®]

CLASSICS

“Classics Never Go Out of Style”



AKRO CLASSICS™

Superior Manufacturing Group is an industry leading supplier of floor matting products for industrial, commercial, and food service markets with 60 years of manufacturing expertise...and counting. The AKRO® Classics™ line represents the reemergence of an industry standard brand that epitomizes no frills quality and functionality, no nonsense service and support, at a good old fashioned reasonable price.

The AKRO® Classics™ family of floor matting products is perfectly suited for a wide variety of application requirements including entrance matting, anti-fatigue matting, and anti-slip/safety matting. The AKRO® Classics™ line was developed through years of manufacturing efficiency, quality materials and craftsmanship, combined with effective distribution partnerships and strategies.

We've taken out all of the marketing fluff, removed the unneeded hype, and cut-back on the unnecessary extras. The end result is a quality product, available today, providing value for years to come... a "Classic".

And remember... "Classics never go out of style!"

INDEX:

111 Clean-N-Dry Classic™	3
508 Diamond-Cushion Classic™	4
509 Diamond-Tuff Classic™	
510 Diamond-Tuff Classic™ Max	5
501 Cushion-Connect Classic™	6
502 Cushion-Connect Classic™ Solid	7
503 Drain-Step Classic™	8
504 Beveled Drain-Step Classic™	9
505 Grit-Step™	10
506 Grit-Step™ Solid	11

TERMS & CONDITIONS:

PRODUCT SPECIFICATIONS: All products are manufactured to meet or exceed normal industry standards. Reasonable variations in size and/or color may occur. Tolerances will vary by manufacturing process. For specific information on any given product, contact our customer service department.

TERMS: 1% 10 Days, Net 30 Days. Discount applies ONLY to invoices paid within 10 days of invoice date. (Shipping charges, handling charges and taxes are excluded.)

PAYMENT: Superior Manufacturing Group accepts payments via VISA®, MASTERCARD®, and American Express®.



C.O.D. payments no longer accepted.

PRICING: All prices are manufacturer's suggested list. Pricing quoted only to existing NOTRAX® & AKRO® Distributors. Prices are subject to change without notice.

ORDERING: When ordering, specify product number, size, color, quantity and any special instructions required.

MINIMUM ORDER CHARGE: No minimum order required. However, a \$5.00 small-order handling charge will be added to all orders having a net value of \$25.00 or less.

FREIGHT TERMS: F.O.B. Factory, -IL, GA or MS - No Freight Allowed. A handling charge will be imposed on all U.P.S.™; FedEx™ Ground & FedEx™ Shipments.

DAMAGED GOODS AND SHORTAGES: All delivered material should be inspected and counted BEFORE accepting shipment. Any damages or shortages should be documented on freight bill. If any discrepancies occur, please contact our customer service department for assistance in filing a claim.

RETURN GOODS AUTHORIZATION: Factory approval is required prior to product returns. Standard stock items in new saleable condition will be accepted for return, freight prepaid subject to a 15% or 20% (depending on product) restocking charge. Custom sizes, cut lengths or special ordered products are non-refundable and non-returnable. Return shipments must be made to the correct plant as noted on the return goods authorization. Failure to do so will incur a transportation fee deducted from the credit.

RESTOCKING CHARGES:

Full Rolls/Stock Sizes-15%
Broken Cases-20%

SUPERIOR MANUFACTURING GROUP, INC.

5655 West 73rd Street • Bedford Park, Illinois 60638
(708) 458-4600 • (800) 621-2802 • Fax: (800) 322-7105
www.notrax.com • info@notrax.com

111 CLEAN-N-DRY CLASSIC™



Charcoal



Brown

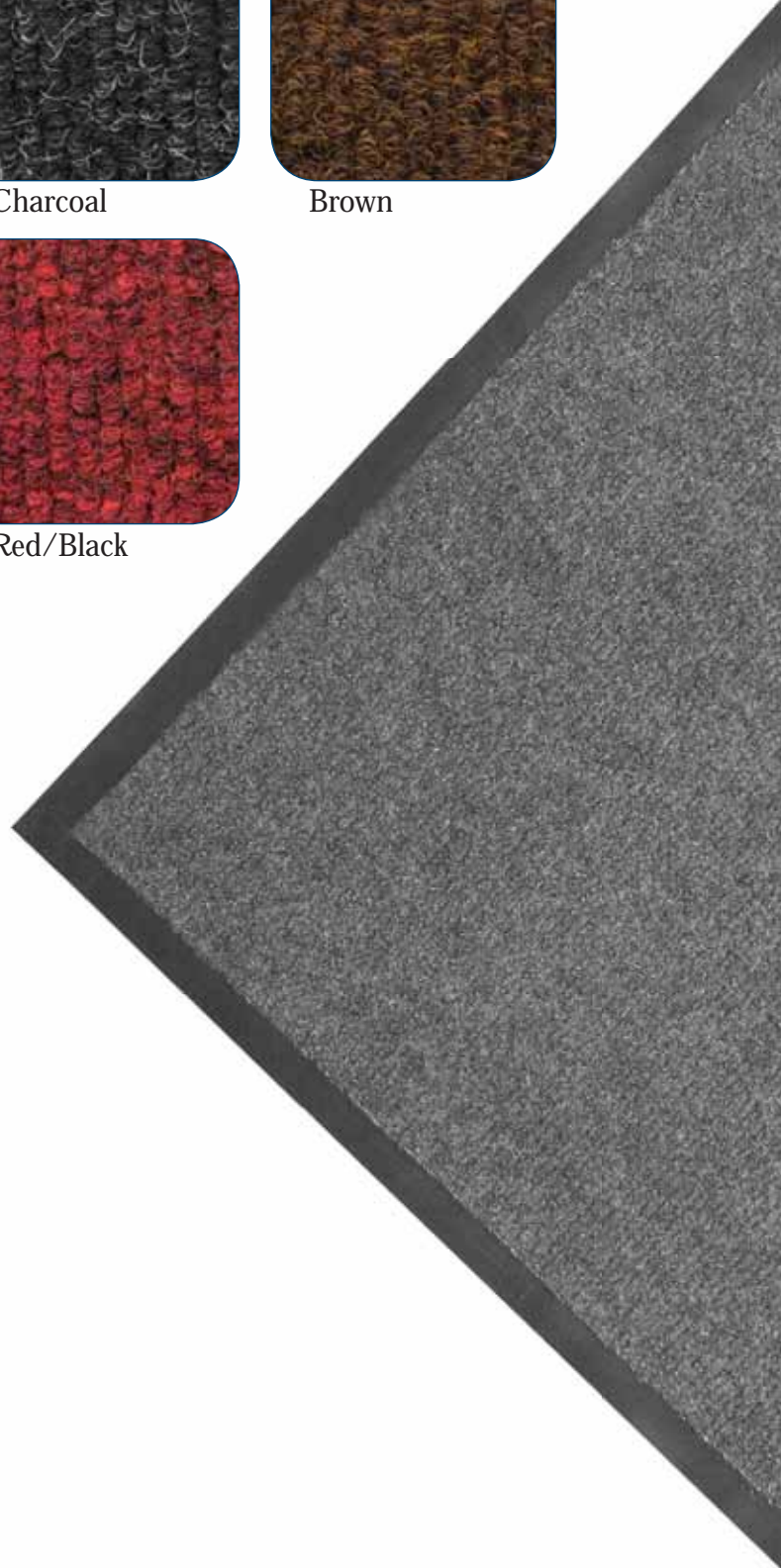


Red/Black

Where to Specify:

**Indoor - Entrancesways, Lobbies,
all light to medium traffic areas**

- Carpet top made from 50% recycled needle punched polyethylene (PET) yarn
- 50 Mil vinyl backing to reduce mat movement
- 1/4" overall thickness – performs well in narrow clearance doorways
- Available colors: Charcoal, Brown, Red/Black
- Available sizes: 2' x 3', 3' x 4', 3' x 5', 3' x 6', 3' x 10', 4' x 6', 4' x 8'
- Roll sizes: 3' x 60', 4' x 60', 6' x 60'



508 DIAMOND-CUSHION CLASSIC™



Black



Black/Yellow

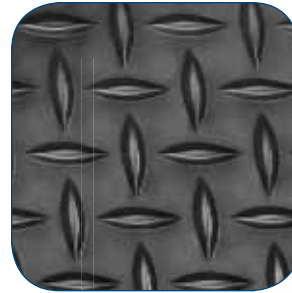


Where to Specify:
Areas where standing occurs for long periods of time and cost is a concern

- PVC closed cell foam relieves leg and back discomfort; provides a barrier to cold floors
- Diamond pattern top surface for added traction; easy to sweep clean
- 1/2" overall thickness
- Available colors: Black, Black/Yellow
- Available sizes: 2' x 3', 2' x 6', 3' x 4', 3' x 5', 3' x 6', 3' x 12'
- Roll sizes: 2' x 60', 3' x 60', 4' x 60', 6' x 60'

509 DIAMOND-TUFF CLASSIC™

510 DIAMOND-TUFF CLASSIC™ MAX



Black



Black/Yellow

Uni
FUSION™

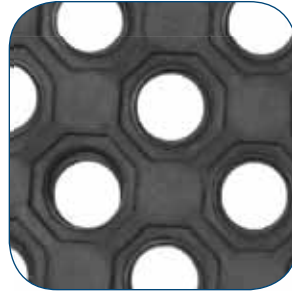
Where to Specify:

Areas that require anti-fatigue relief, sure footing, and durability

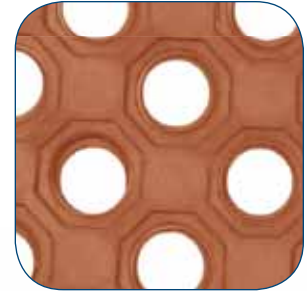
- Vinyl diamond-plate top surface combined with dense closed cell foam base utilizing exclusive UniFusion™ technology
- UniFusion™ bond guaranteed for the life of the mat – call for details
- Top surface made from 100% recycled PVC
- Available in (2) thicknesses;
 - Diamond-Tuff Classic™ – 9/16"
 - Diamond-Tuff Classic™ Max – Full 1"
- Available colors: Black, Black/Yellow
- Available sizes: 2' x 3', 3' x 5'
- Roll sizes: 2' x 75', 3' x 75', 4' x 75'



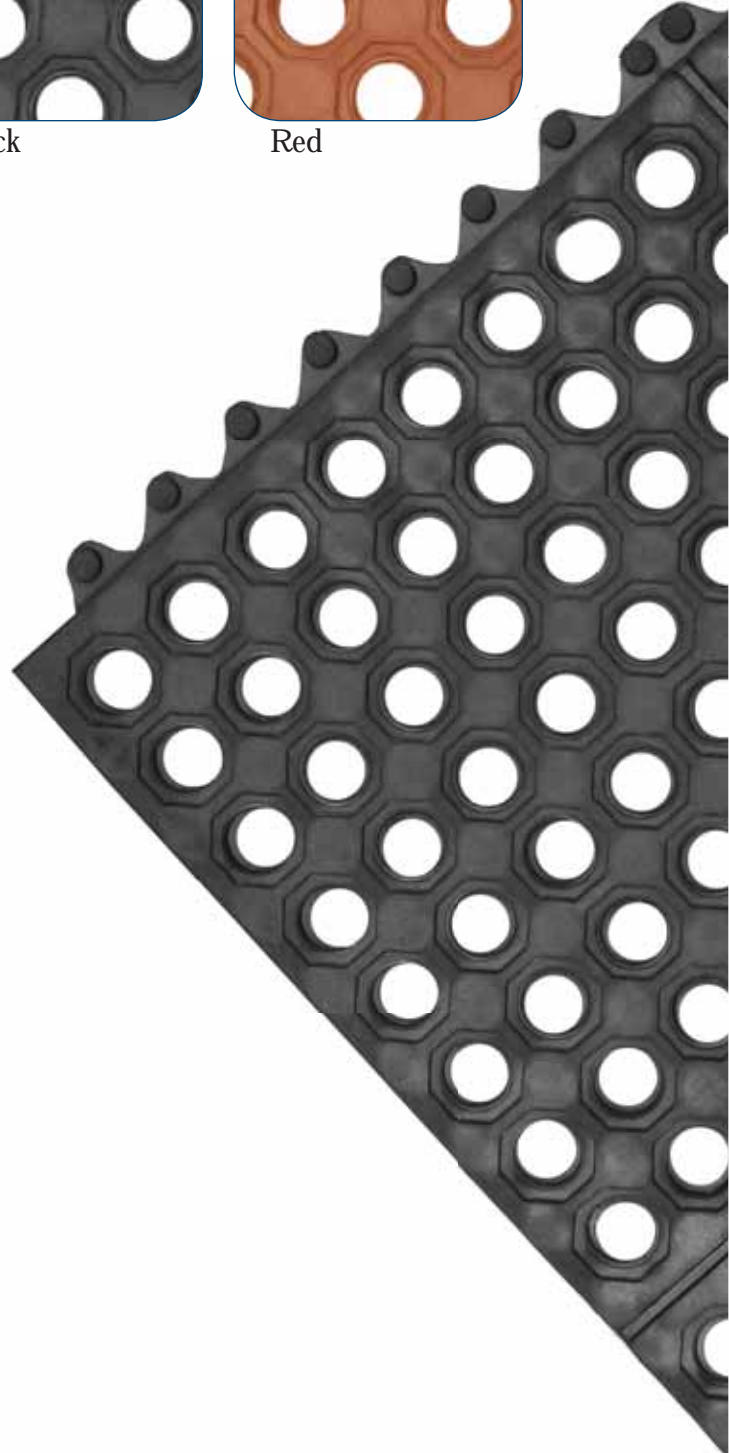
501 CUSHION-CONNECT CLASSIC™



Black



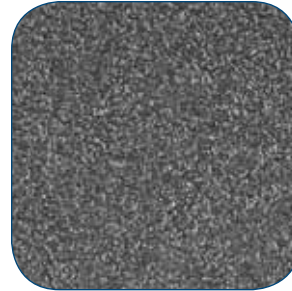
Red



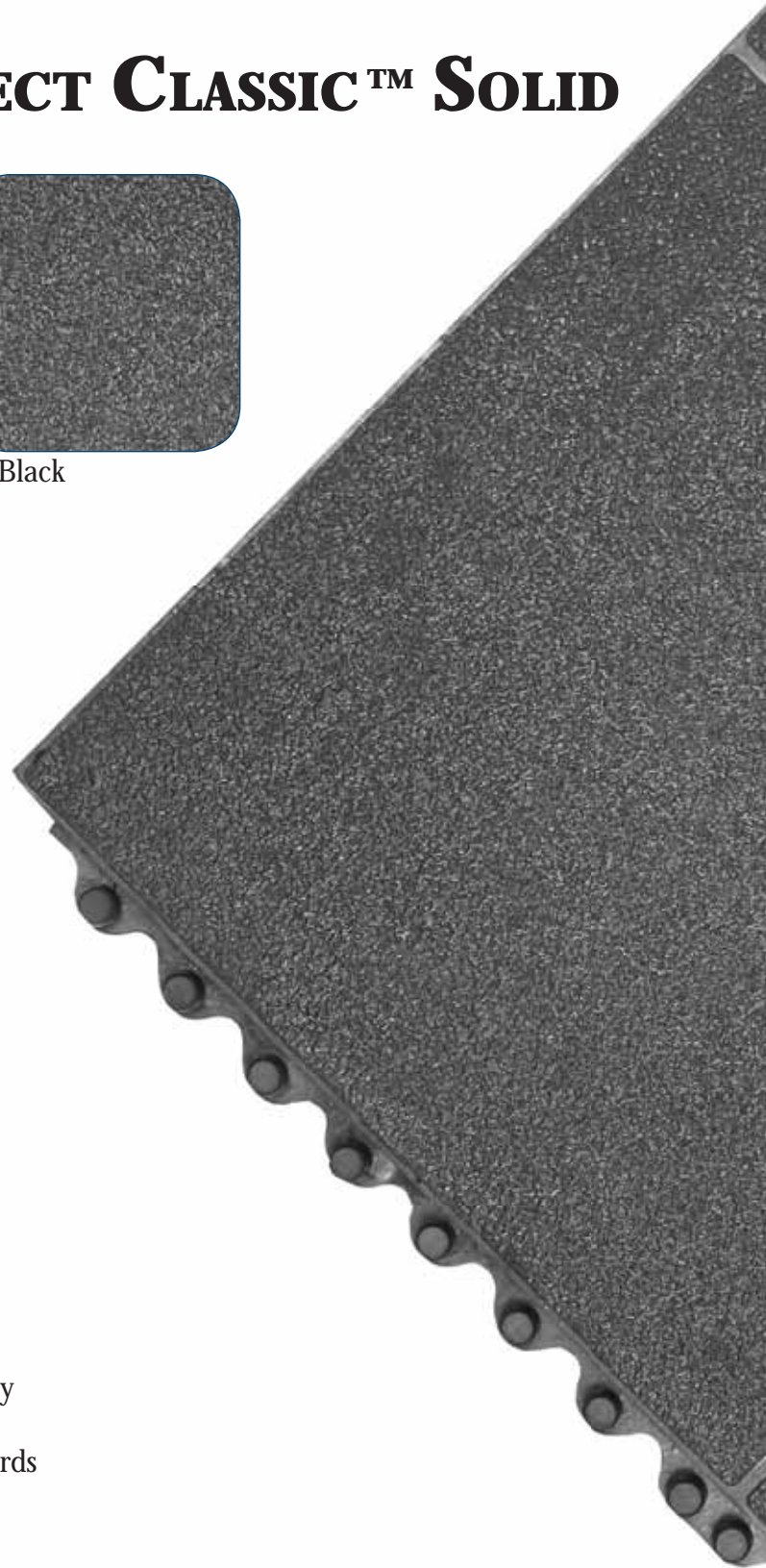
Where to Specify: Wet environments where comfort and durability is critical

- Available in general purpose (Black) and heavy-duty (Red) rubber compounds
- Large hole drainage design keeps liquids and debris away from worker platform
- Modular design allows for longer lengths and custom configurations
- Contains recycled rubber for a more environmentally friendly manufactured product
- Optional ramps (#507) available to reduce trip hazards
- 1/2" overall thickness
- Available colors: Black, Red
- Ramp colors: Black
- Available sizes: 3' x 3'

502 CUSHION-CONNECT CLASSIC™ SOLID



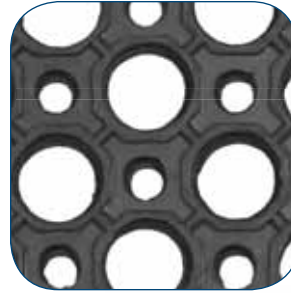
Black



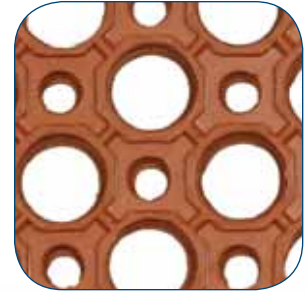
Where to Specify: **Dry environments where comfort and durability is critical**

- Durable rubber compound protects against oils, greases, and machine cutting fluids
- Modular design allows for longer lengths and custom configurations
- Contains recycled rubber for a more environmentally friendly manufactured product
- Optional ramps (#507) available to reduce trip hazards
- 1/2" overall thickness
- Available colors: Black
- Ramp colors: Black
- Available sizes: 3' x 3'

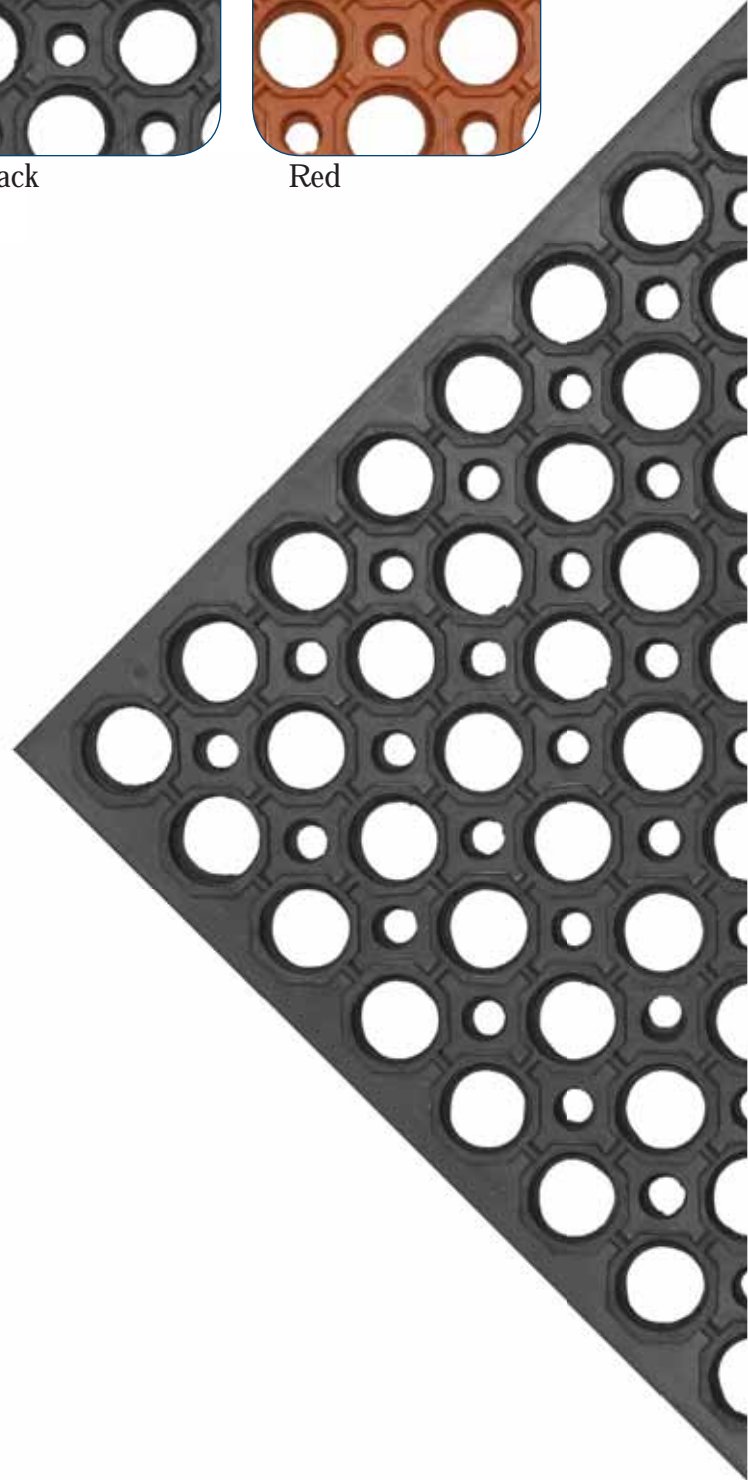
503 DRAIN-STEP CLASSIC™



Black



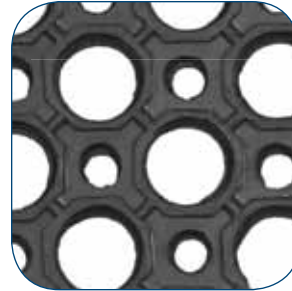
Red



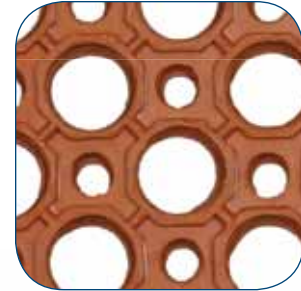
Where to Specify: **Wet environments where comfort and durability is critical**

- Available in general purpose (Black) and heavy-duty (Red) rubber compounds
- Large hole drainage design keeps liquids and debris away from worker platform
- Aggressive anti-slip surface for better traction
- Contains recycled rubber for a more environmentally friendly manufactured product
- 3/4" overall thickness
- Available colors: Black, Red
- Available sizes: 3' x 5'

504 BEVELED DRAIN-STEP CLASSIC™



Black

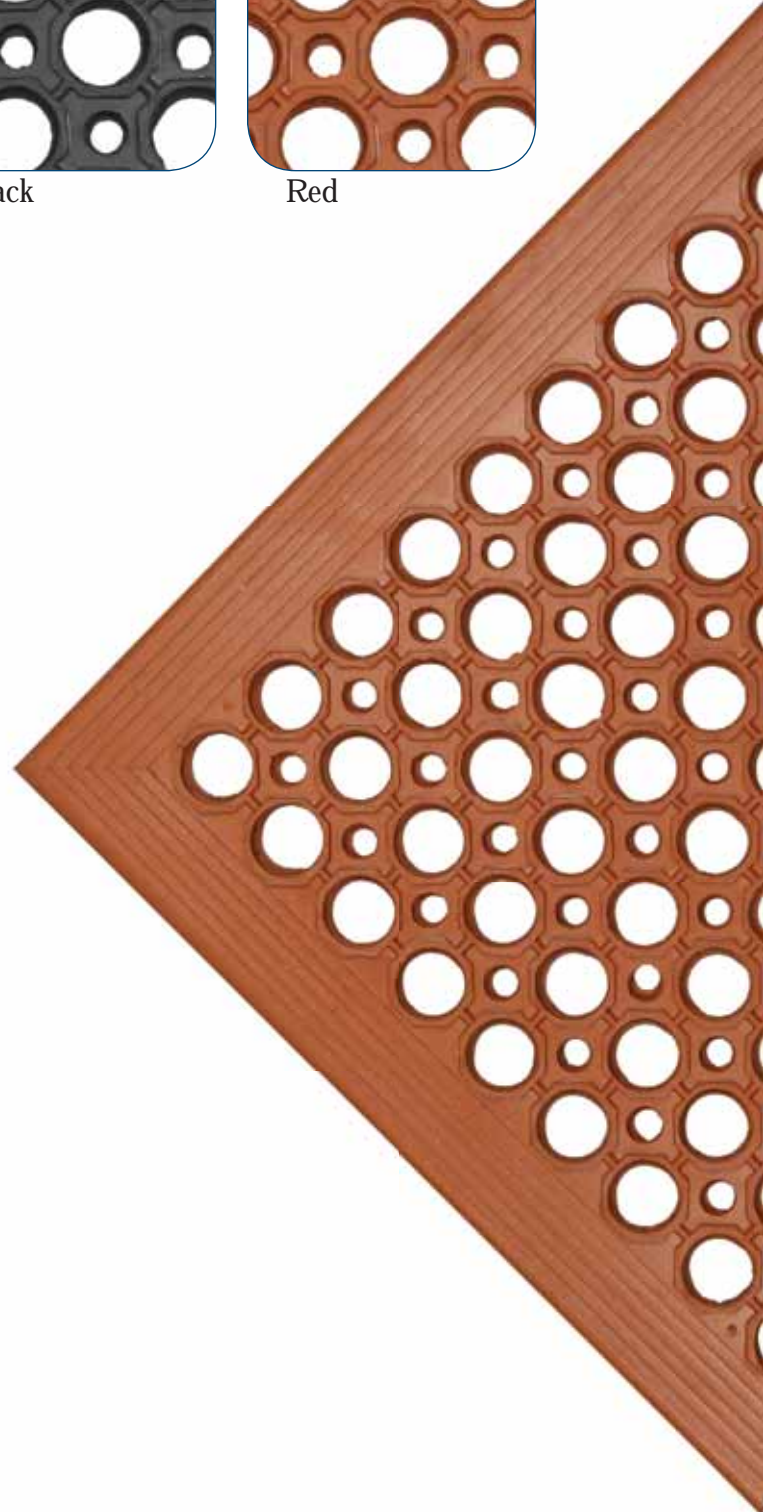


Red

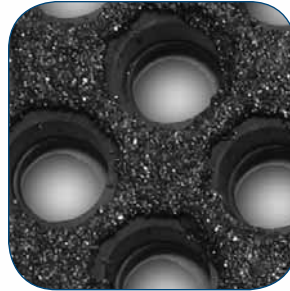
Where to Specify:

Wet work station environments that require basic fatigue relief

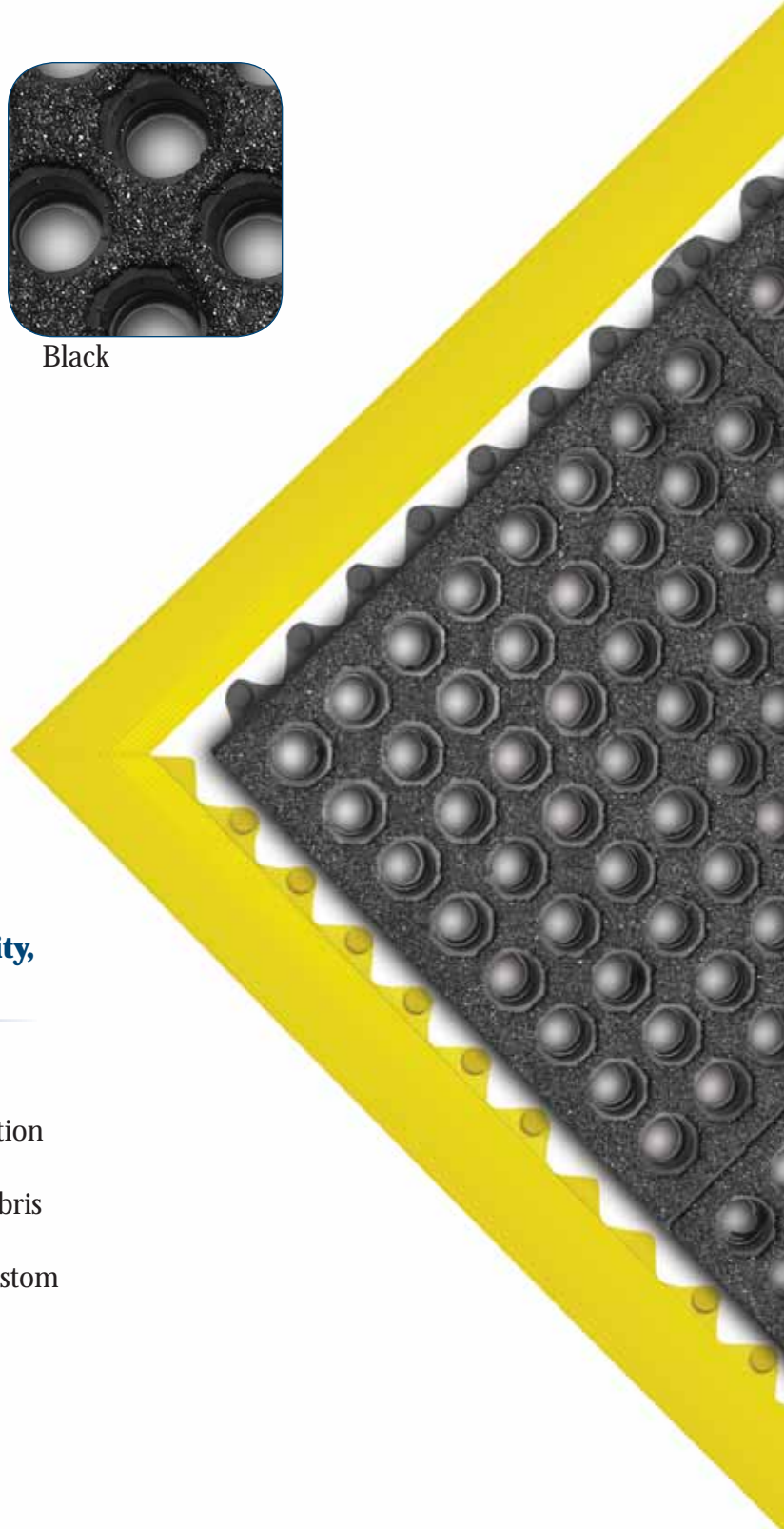
- Available in general purpose (Black) and heavy-duty (Red) rubber compounds
- Large hole drainage design keeps liquids and debris away from worker platform
- Molded-in beveled edges reduces trip hazards
- Low profile for easy cart traffic
- Contains recycled rubber for a more environmentally friendly manufactured product
- 1/2" overall thickness
- Available colors: Black, Red
- Available sizes: 3' x 5'



505 GRIT-STEP™



Black

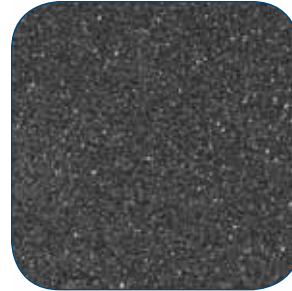


Where to Specify:

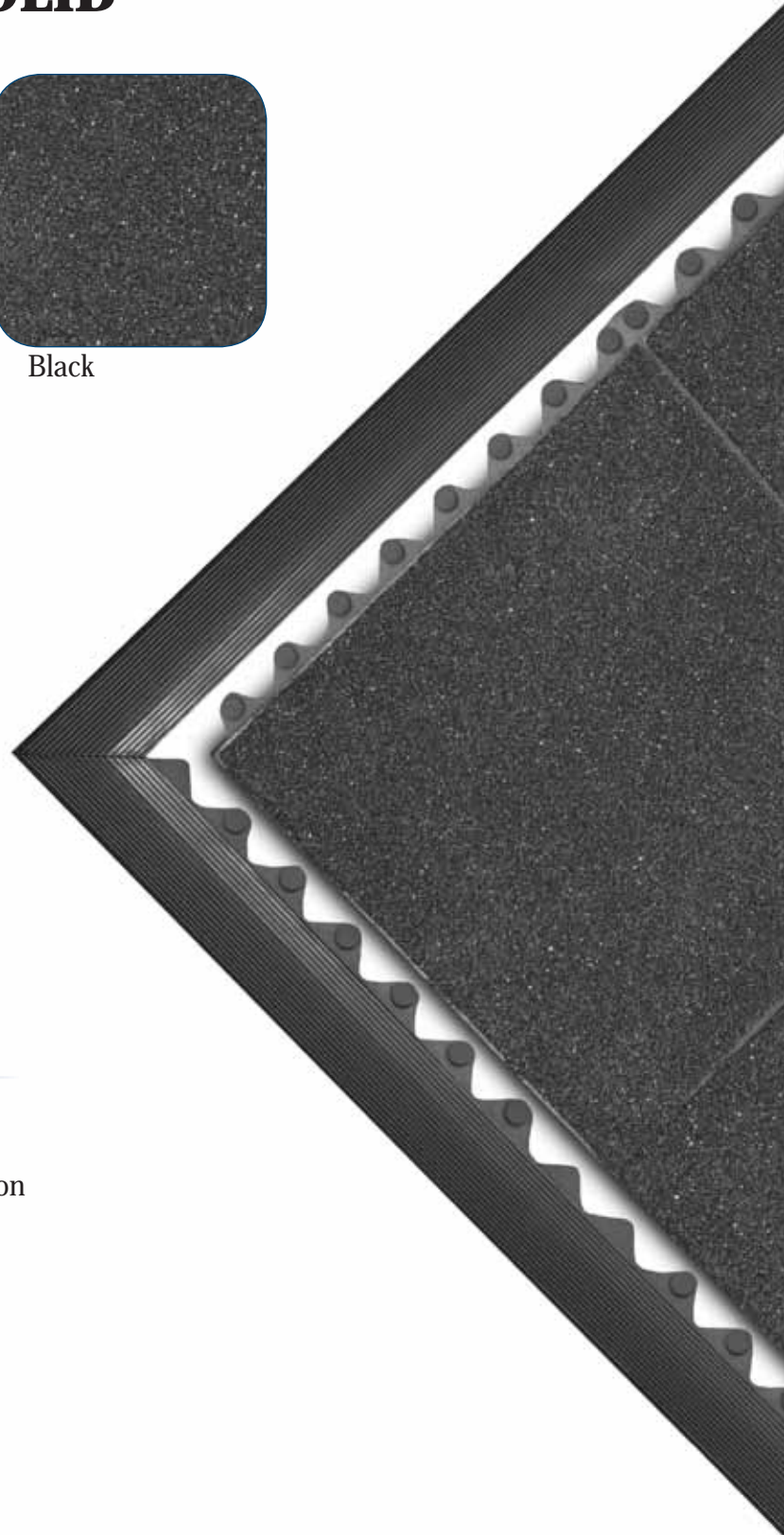
Wet environments where comfort, durability, and added traction is critical

- Resilient rubber compound offers exceptional fatigue relief
- Silicon Carbide grit surface provides added traction in extremely wet environments
- Large hole drainage design keeps liquids and debris away from worker platform
- Modular design allows for longer lengths and custom configurations
- Optional beveled ramps (M.D. #551) available to reduce trip hazards and allow easy access on and off the mat
- 3/4" overall thickness
- Available colors: Black
- Ramp colors: Black, Yellow
- Available sizes: 3' x 3'

506 GRIT-STEP™ SOLID



Black



Where to Specify:
Light to moderately wet environments
where comfort, durability, and added
traction is critical

- Resilient rubber compound offers exceptional fatigue relief
- Silicon Carbide grit surface provides added traction in extremely wet environments
- Modular design allows for longer lengths and custom configurations
- Optional beveled ramps (M.D. #551) available to reduce trip hazards and allow easy access on and off the mat
- 3/4" overall thickness
- Available colors: Black
- Ramp colors: Black, Yellow
- Available sizes: 3' x 3'



SUPERIOR MANUFACTURING GROUP, INC.

5655 W. 73RD ST. CHICAGO, IL 60638
1.800.621.2802 WWW.NOTRAX.COM